

CIMON IM series

- CM-IM-12W-R/C(H)-D
- CM-IM-15W-R/C(H)-D
- CM-IM-21W-R/C-D

CONTENTS

Essential Safety Precautions	3
General Safety Precautions	5
Package Contents	7
Dimensions	8
Interfaces	9
Installation	16
Wiring & Power Supply Cautions	18
Grounding Cautions	19
Specifications	20
Calibration Setting	23
Multi-Monitor Setting	27
Product Warranty.....	32

- For your safety and the safe operation of this product, please read this manual before using the product. The manual is subject to change without notice.
- Please review the product specifications in this manual to determine the suitability of this product for its intended use.
- For your safety only qualified persons should perform electrical and wiring attachments to this product.
- This equipment has been tested and found to comply with the limits for a Class A digital device, pursuant to part 15 of the FCC Rules.

Essential Safety Precautions



Precautions for design

- Do not implement a trigger in the software for emergency stop of hazardous operation. If IM is damaged while output signal remains ON or OFF, fatal accident may be caused. Design an emergency stop switch outside of the product so it can be manually stopped.
- Do not use IM for the purpose of generating an alarm for injury to operators, breakdown of devices, or production halt.
- Design the system so that it can be hand-operated in case the product malfunctions.
- Do not use IM as a control unit on applications requiring extreme stability such as airplane control device, aerospace device, centralized data processing device, nuclear control system, medical life support system, etc.
- In case IM is used in transportations such as trains, vehicle, vessels, or warning devices for disasters and crime, various safety devices, and medical devices excluding life support system, you are required to design backup or failure provision system to secure reliability and stability.
- Even if the screen is black, the unit could still be turned on with a dead LCD backlight. When the operator touches a panel in this situation, the action could cause device's malfunction. Do not use this product for controlling safety devices such as emergency stop switches.

Precautions for installation

- Please do not disassemble or modify the IM. It will void the warranty and may cause an electric shock.
- This version of the IM is not rated for flammable environments. Do not use this IM around flammable gases. It may cause an explosion.

Essential Safety Precautions



Precautions for wiring

- Make sure to check if the device's power supply is turned off before wiring. Failure to do so may cause electric shock or damage to the device.
- Do not use power beyond the specified voltage range of the IM. Doing so may cause fire, electric shock or damage to the device.

Maintenance

- The LCD contains a powerful irritant and if for any reason the panel is damaged and this liquid contacts any part of your body, be sure to wash that area with running water for 15 minutes. If any of this liquid enters your eye, flush your eye for 15 minutes with running water and contact a physician.

General Safety Cautions

Cautions

Precautions for installation

- Be sure to securely connect all cable connectors to the IM. A loose connection may cause incorrect input or output.
- Make sure to install the unit vertically.

Precautions for wiring

- Field Ground (FG) wires must be run individually from each unit to the master grounding terminal. DO NOT daisy chain the FG wires between devices.
- Correctly wire the IM, be sure that the rated voltage and terminal layout are within the designated range. If the voltage supplied differs from the rated voltage, or incorrect wiring or grounding is performed, it may cause a fire or unit malfunction and it will void the warranty.
- Make sure to tighten the screw with standard torque (0.5~0.6 N·m). Loose connections may cause short, fire or malfunction.
- Be careful that metal debris do not enter the IM, they may cause a fire, IM damage or malfunction.

Precautions for unit disposal

- When this unit is disposed of, it should be done so according to your country's regulation for similar types of industrial waste.

- Do not strike the touch panel with a hard or pointed object, or press on the touch panel with too much force, since it may damage the touch panel or the display.
- Do not install the IM where the ambient temperature exceeds the allowed range. Doing so may cause the IM to malfunction or shorten product lifespan.
- Do not restrict or limit naturally occurring rear-face ventilation of the IM, or storing or using the IM in an environment that is too hot.
- Do not use the IM in areas where large, sudden temperature changes can occur. These changes can cause condensation to form inside the unit, possibly causing the unit to malfunction.
- Do not allow water, liquids, metal or charged particles to enter inside the IM, since they can cause either a IM malfunction or an electrical shock.
- Do not store or use the IM in direct sunlight, or in excessively dusty or dirty environments.
- Do not store or use the IM where strong jolting or excessive vibration can occur.
- Do not store or use the IM where chemicals (such as organic solvents, etc.) and acids can evaporate, or where chemicals and acids are present in the air.
- Do not use paint thinner or organic solvents to clean the IM.
- Do not store or operate the LCD display in areas receiving direct sunlight, since the sun's UV rays may cause the LCD display's quality to deteriorate.
- After turning the IM OFF, be sure to wait a few seconds before turning it ON again. If the IM started too soon, it may not start up correctly.

Package Contents

The following items are contained in the package of the IM. Before using the IM, please confirm that all items listed here are present.

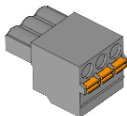
- IM Unit x 1



- USB Cable x 1



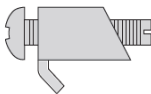
- Power plug x 1



- Installation Guide x 1



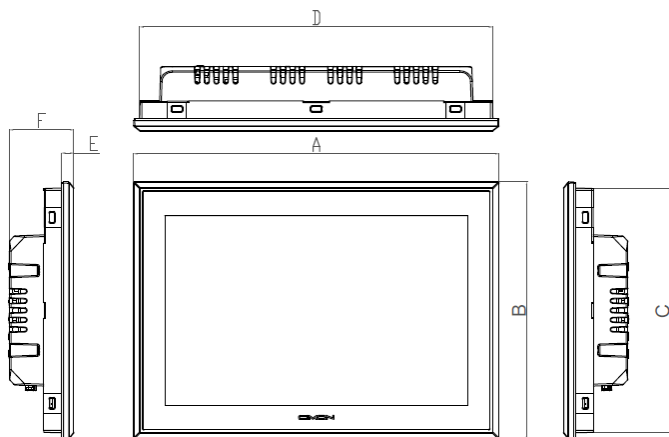
- Fastener x 10



This unit has been carefully packed, with special attention to quality. However, should you find anything damaged or missing, please contact your local IM distributor immediately.

Dimensions

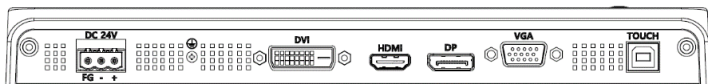
Unit: mm



	IM-12W	IM-15W	IM-21W
A	314.9	394.2	545.2
B	221.2	248.5	334.8
C	210.5	237.8	324.4
D	304.2	383.5	534.8
E	10.9	10.9	10.9
F	55.6	55.6	59.9

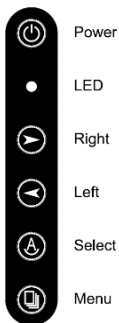
Interfaces

• Port



※ Use shielded cables. Depending on the condition of the cable, noise may affect the display.

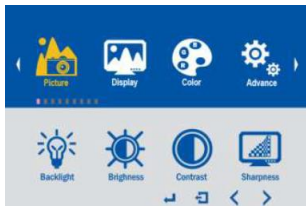
• Control Button



LED	
Green	ON (Active)
Red	ON (Power Saving Mode)
LED-OFF	OFF

Interfaces

• OSD FUNCTION



Picture	
Backlight	0 – 100
Brightness	0 – 100
Contrast	0 – 100
Sharpness	0 – 4



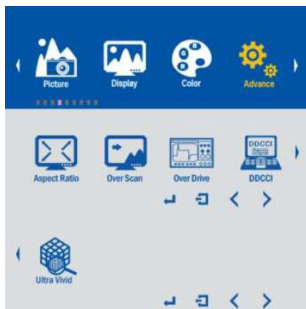
Display	
Auto Adjust	Auto Adjust Control
H Position	0 – 100
V Position	0 – 100
Clock	0 – 100
Phase	0 – 100
Disp Rotate	Not Supported
Disp Latency	Not Supported
Freeze	Not Supported
* Not Supported in PORT except RGB.	

Interfaces

• OSD FUNCTION



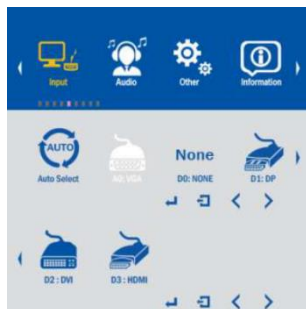
Color	
Panel Uniformity	ON / OFF
Gamma	OFF / 1.8 / 2.0 / 2.2 / 2.4
Temperature	9300 / 7500 / 6500 / 5800 / sRGB / User
Color Effect	Standard / Game / Movie / Photo / Vivid / User
Demo	OFF / TYPE1 ~ 5
Color Format	RGB / YUV
PCM	sRGB / Adobe RGB / User / Native
Hue	1 – 100
Saturation	1 – 100



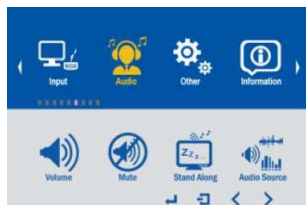
Advance	
Aspect Ratio	Full / 16:9 / 4:3 / 5:4 / 1:1 / User
Over Scan	ON / OFF
Over Drive	ONOFF / OD Gain
DDCCI	ON / OFF
Ultra Vivid	OFF / L / M / H

Interfaces

• OSD FUNCTION



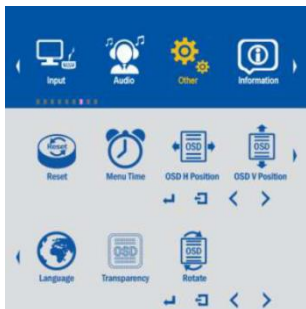
Input	
Input Source	Auto select / VGA / DP / HDMI / DVI



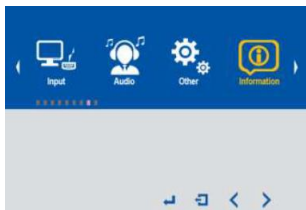
Audio	
* Audio output is not supported.	

Interfaces

• OSD FUNCTION



Other	
Reset	Reset
Menu Time	0 – 60
OSD H Position	0 – 100
OSD V Position	0 – 100
Language	ENGLISH / 한글
Transparency	0 – 100
Rotate	0 / 90 / 180 / 270



Information
Display information

Interfaces

- VGA, DVI Input format

Spec Mode	Pixel Freq.	Horizontal Timing		Vertical Timing	
		Freq.	Active	Freq.	Active
	MHz	KHz	Pixel	Hz	Lines
640×480@60Hz	28.175	31.469	640	59.940	480
640×480@72Hz	31.500	37.861	640	72.809	480
640×480@75Hz	31.500	37.500	640	75.000	480
800×600@56Hz	36.000	35.156	800	56.250	600
800×600@60Hz	40.000	37.879	800	60.317	600
800×600@72Hz	50.000	48.077	800	72.188	600
800×600@75Hz	49.500	46.875	800	75.000	600
1024×768@60Hz	65.000	48.363	1024	60.005	768
1024×768@70Hz	75.000	56.476	1024	70.070	768
1024×768@75Hz	78.750	60.023	1024	75.030	768
1280×720@60Hz	74.500	44.772	1280	59.855	720
1280×720@75Hz	95.750	56.456	1280	74.777	720
1280×768@60Hz	80.140	47.700	1280	60.000	768
1280×768@75Hz	102.250	60.289	1280	74.893	768
1280×960@60Hz	108.000	59.699	1280	59.939	960
1280×960@75Hz	129.600	75.000	1280	75.000	960
1360×768@60Hz	84.750	47.720	1360	59.799	768
1280×1024@60Hz	108.000	63.981	1280	60.020	1024
1280×1024@75Hz	135.000	79.976	1280	75.035	1024
1600×1200@60Hz	162.000	75.000	1600	60.000	1200
1920×1080@60Hz	138.500	66.587	1920	59.934	1080

Interfaces

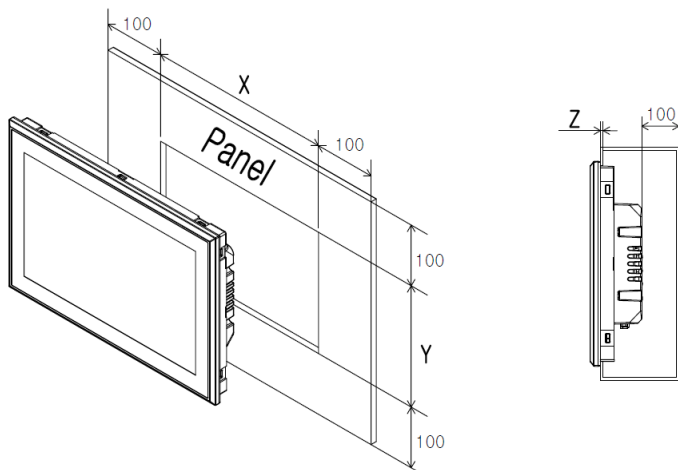
- HDMI, DP Input format

Spec Mode	Horizontal Timing		Vertical Timing	
	Freq.	Active	Freq.	Active
	KHz	Pixel	Hz	Lines
720×480(P)	31.469	720	59.940	480
1280×720(P)	45.000	1280	60.000	720
1920×1080(P)	33.750	1920	60.000	540
720×480(I)	15.734	720	59.940	240
720×576(P)	31.250	720	50.000	576
1280×720(P)	37.500	720	50.000	720
1920×1080(I)	28.125	1920	50.000	540
720×576(I)	15.625	720	50.000	288
1920×1080(P)	67.432	1920	59.940	1080
1920×1080(P)	56.250	1920	50.000	1080
1920×1080(I)	26.973	1920	23.976	1080
1920×1080(I)	33.750	1920	30.000	1080

Installation

- Insert IM unit into the panel cut from the front side, as shown below.

Unit: mm



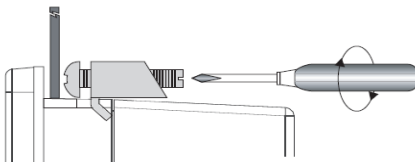
Panel Cut	X	Y
IM-12W	305	212
IM-15W	385	239
IM-21W	536	326

- Panel thickness (Z): 1.6 – 3 mm

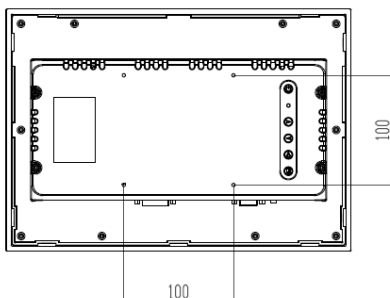
Note: If the panel is too thick, it may be difficult to install the fastener properly.

Installation

- Attach the installation fasteners from inside the panel.
- Insert each hook of fastener into the slot and tighten it with a screwdriver.



- Tightening the screws with too much force can damage the case of the IM.
- The necessary torque is 0.5-0.6 N-m.
- Depending on the thickness of installation panel, the number of installation fasteners used may need to be increased to provide the desired level of moisture resistance.



- VESA mount supported (100 x 100 mm)
- Recommended bolt specification: M4, maximum length 10 mm

Note: Using bolts longer than 10 mm may cause damage to the internal board.

Wiring & Power Supply Cautions

- To avoid an electric shock, when connecting the power cord terminals to the power terminal block, confirm that the power supply is completely turned OFF via a breaker or similar unit.
- Double-check if the product is AC or DC.
- Check the rated voltage of the product.
- In case of the terminal block connector type, make sure that power cord is connected properly.




- To avoid a short caused by loose pin terminals, be sure to use pin terminals with an insulating sleeve.
- When the FG terminal is connected, be sure the wire is grounded. Not grounding the IM unit will result in excess noise and vibration
- The torque required to tighten these screws is 0.5-0.6 N·m.
- Wire Range : 12-22 AWG, Cu, Str, rated 60 °C

Connecting the IM Power Cord

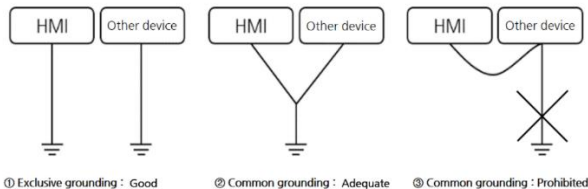
- If the power supply voltage exceeds the GP's specified range, connect a voltage transformer.
- Between the line and the ground, be sure to use a low noise power supply. If there is still an excessive amount of noise, connect a noise reducing transformer.
- The power supply cord should not be bundled with or kept close to the main circuit lines (high voltage, high current), or input/output signal lines.
- Connect a surge absorber to handle power surges.
- To reduce noise, make the power cord as short as possible.

Grounding Cautions

- Inside the IM unit, the SG (Signal Ground) and FG (Frame Ground) terminals are connected to each other.
- When connecting an external device to the IM with the SG terminal, ensure that no short-circuit loop is created when you setup the system.
- **(IM)** FG terminal is located on the side of the input power. Connect the grounding to the part where it is marked with .

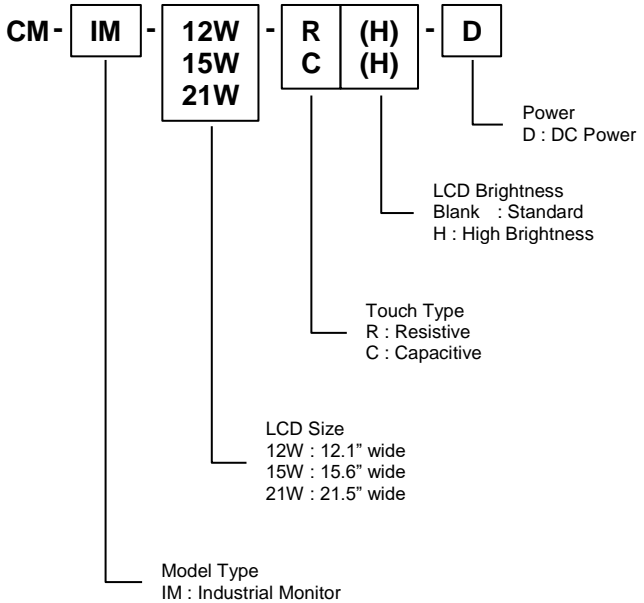


- Connect the FG terminal on the power supply to an exclusive ground. (Refer to the figure below)



- If the device does not function properly when grounded, disconnect the ground wire from the FG terminal.

Specifications



Specifications

Item	Item	IM-12W IM-12W-H	IM-15W IM-15W-H	IM-21W
Display	Resolution	WXGA 1280x800	FHD 1920x1080	
	Size	12.1 inch	15.6 inch	21.5 inch
	Contrast Ratio	1000:1	800:1	1000:1
	Luminance	12W : 600 cd/m ² 12W-H : 1,000 cd/m ²	15W : 450 cd/m ² 15W-H : 1,200 cd/m ²	21W : 400 cd/m ²
	Display Colors	16.7M colors		
	View Angles (R/L/U/D)	12W : 85° / 85° / 85° / 85° 12W-H : 89° / 89° / 89° / 89°	89° / 89° / 89° / 89°	89° / 89° / 89° / 89°
	Active Area (mm)	261.12(H) x 163.2(V)	344.16(H) x 193.59(V)	476.064(H) x 267.786(V)
	Backlight Life	50,000 hours		
Touch Screen	Type	R : 5-Wire Resistive / C : 10-point Capacitive		
	Interface	USB		
General	Rated Voltage	9~36 VDC		
	Power Consumption	12W : Max 16.5 W 12W-H : Max 16.5 W	15W : Max 20.3 W 15W-H : Max 30.8 W	21W : Max 22.7 W
	Video Port	HDMI, DP, DVI, VGA		
	Dimension (mm)	314.9 x 221.2 x 55.6	394.2 x 248.5 x 55.6	545.2 x 334.8 x 59.9
	Panel Cut (mm)	305 x 212	385 x 239	536 x 326
	Mount	100 x 100, M4 (max. 10 mm)		
	Weight	2.6 kg	3.7 kg	6.5 Kg
	Certification	KC, FCC, CE, UL		
	Protection Class	IP68		IP66

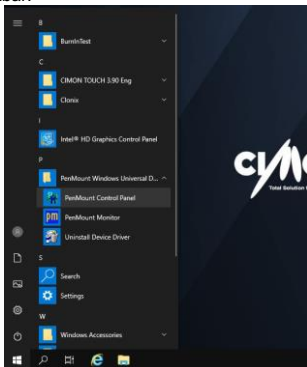
Specifications

Item	Description
Operating Temperature	12W / 15W : -20°C – 70°C 21W : 0°C – 50°C
Storage Temperature	12W / 15W : -20°C – 80°C 21W : -20°C – 60°C
Operating Humidity	10–90% RH (below 29°C, not condensation)
Storage Humidity	10–90% RH (below 39°C, not condensation)
Environment Condition	Overvoltage category II, Altitude up to 2000m (800 hPa–1114 hPa)
Dust	≤ 0.1 mg/m ³
Pollution Degree	≤ Pollution degree 2
Operating ambience	No corrosive gas and dust
Vibration Resistance	5–9 Hz Single amplitude: 3.5 mm 9–150 Hz Fixed acceleration: 9.8 m/s ² (1G) X,Y,Z directions for 10 times
Shock Resistance	Max. Shock acceleration : 147m/s ² (15G) Duration : 11ms Pulse Waveform : Half-sine pulse (X,Y,Z directions for 3 times)
Noise Resistance	Impulse, EFT/Burst, Surge, ±0.5 KV
Electrostatic Discharge	Contact Discharge ±4 kV / Air Discharge ±8 kV

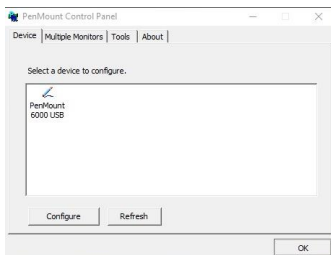
Calibration Setting (12W/15W-R)

Calibration setting is to calibrate the touch panel when a touch problem occurs. Following is procedure of the touch calibration.

1. Click [Start] – [PenMount Windows Universal Driver] – [PenMount Control Panel] icon in the Taskbar.

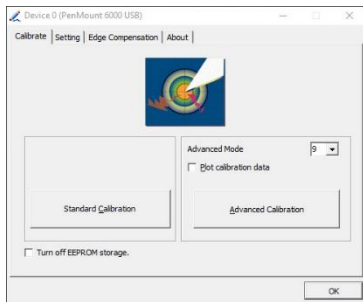


2. Double click “PenMount 6000 USB”.



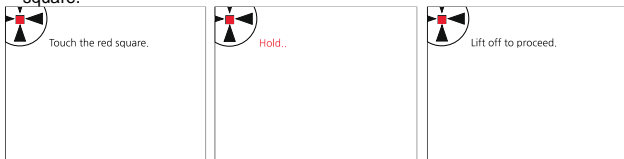
Calibration Setting (12W/15W-R)

3. Click “Standard Calibration” to start calibration.



4. The red square pops up on the top left corner.

Touch the screen with pen and hold for a while. Then, move to the next red square.



Keep tapping the red point as instruction on the screen.

5. When the process is completed, click “OK” to save calibration setting.

6. Reboot the PC.

After PC restarts, the calibration is completed.

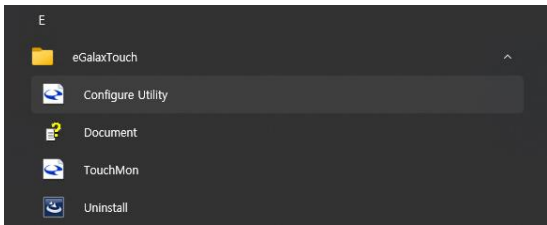


- Need to use USB mouse if there are difficulties in calibration setting when touch point is dislocated.
- “Advanced calibration” is used for more accurate setting.

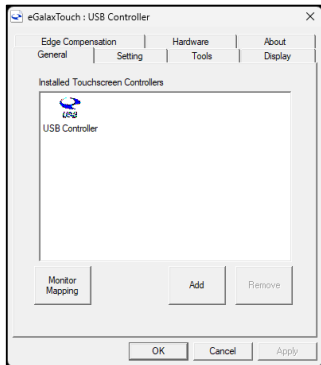
Calibration Setting (21W-R)

Calibration setting is to calibrate the touch panel when a touch problem occurs. Following is procedure of the touch calibration.

1. Click [Start] – [eGalaxTouch] – [Configure Utility] icon in the Taskbar.

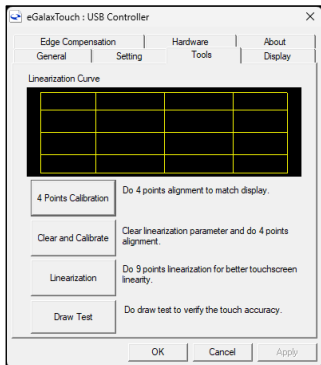


2. Click "Tools".

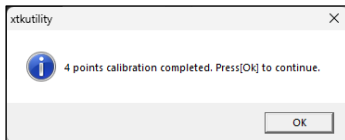


Calibration Setting (21W-R)

- Click "4 Points Calibration" to start calibration.



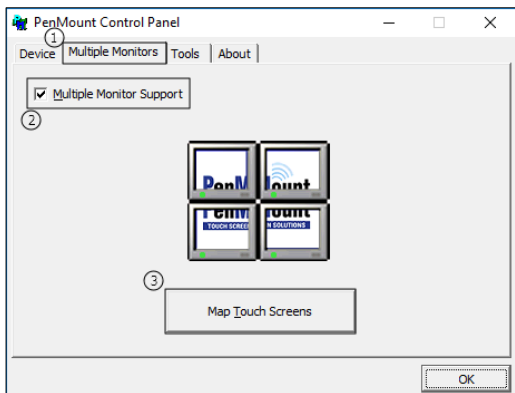
- The red square pops up on the bottom left corner. Touch the screen with pen and hold for a while. Then, move to the next red square.



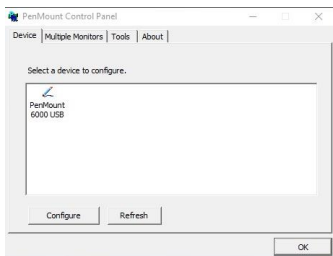
Multi-Monitor Setting (12W/15W-R)

1. Open "PenMout Control Panel"

Click [Multiple Monitors] – [Multiple Monitor Support] - [Map Touch Screens].

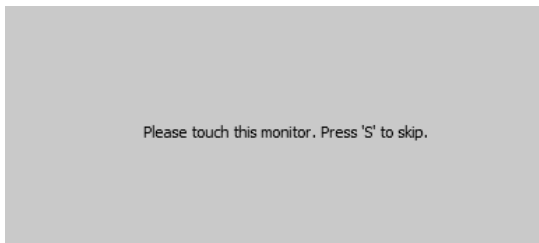


2. Double click "PenMount 6000 USB".

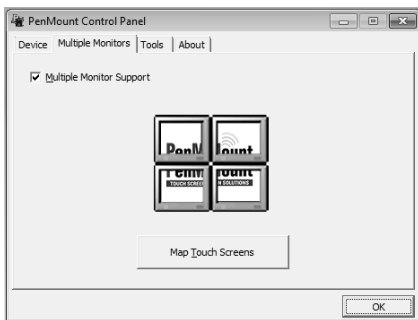


Multi-Monitor Setting (12W/15W-R)

3. If the message appears on the touch monitor, tap the screen. If it appears on another monitor, press 'S' to skip.



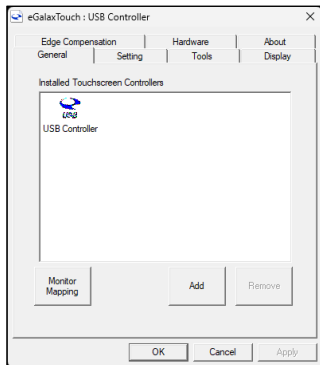
4. Click "OK" to save setting.



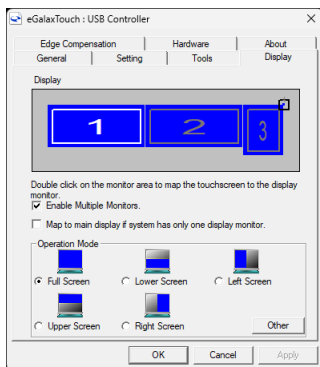
- After setting the multi-monitor, touch screen might be out of calibration. In this case, please recalibrate.

Multi-Monitor Setting (21W-R)

1. Open "eGalaxTouch-Configure Utility"
Click [Display].

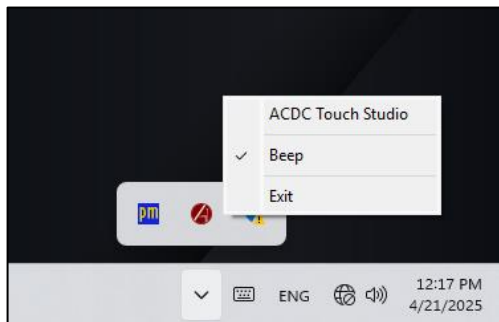


2. Select 'Enable Multiple Monitors'.
Double-click the corresponding monitor number in the Display map.
Press 'OK' to finish.

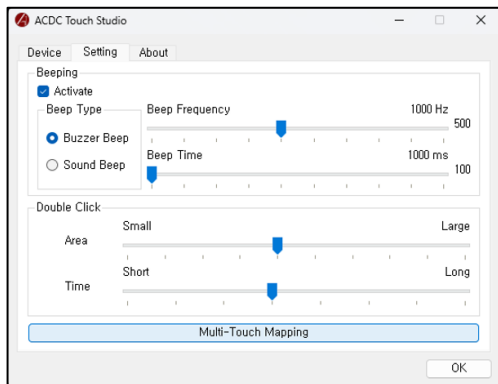


Multi-Monitor Setting (12W/15W/21W-C)

1. Open "ACDC Touch Studio".

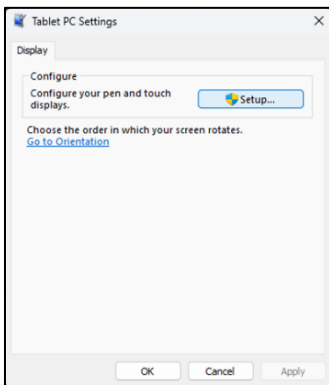


2. Click [Setting].
Click 'Multi-Touch Mapping'



Multi-Monitor Setting (12W/15W/21W-C)

3. Click 'Setup'.



4. Follow the on-screen instructions to tap the screen and complete the setup.

Tap this screen with a single finger to identify it as the touchscreen.

If this is not the Tablet PC screen, press Enter to move to the next screen. To close the tool, press Esc.

Products Warranty

All CIMON products, including hardware, software, and firmware (collectively called "Products"), carry a **three-year warranty** against defects in materials and workmanship beginning from the date of product shipment from CIMON to its appointed distributor. If a product proves defective in materials and workmanship within three years from purchase, we will replace or repair it. **Products returned under warranty after 30 days may be replaced with refurbished or manufactured goods at CIMON's discretion.** CIMON makes no representation or warranty, express or implied, that the operation of the Products will be uninterrupted or error-free or that the functions contained therein will meet or satisfy the buyer's intended use or requirements.

Repaired or replaced Products provided as a result of this warranty are warranted for 90 days from the shipment to the buyer or the remainder of the original warranty term for that particular product, whichever is longer. CIMON's standard policy is that all customers are responsible for freight charges to CIMON when returning products under the warranty return policy.

This warranty will be void if the Products date codes, serial numbers, or seals are removed or defaced. Warranties do not apply to products that have been subjected to abnormal use, abnormal conditions, improper storage, exposure to moisture or dampness, unauthorized modifications, unauthorized repair, misuse, neglect, accident, alteration, improper installation, or other acts that are not the fault of CIMON, including damage caused in shipping. Our warranty also does not apply to any product that has been damaged by external causes such as fire, flood, sand, dirt, lightning, acts of God, battery leakage, theft, blown fuses, improper use of any electrical source or connection to Products, not recommended in writing for interconnection by CIMON.

In no event will CIMON be liable, whether in contract, tort, or under any other legal theory, for lost profits or revenues, loss of use, or similar economic loss for any indirect, special, incidental, consequential, punitive, or similar damages arising out of or in connection with any Products, including non-conforming Products, or for any third-party claims against you relating to the Products, even if we have been advised of the possibility of such a claim. **In no event will our monetary liability concerning any Products exceed the purchase price you paid them.**

To minimize the risk of potential safety problems, you should follow all applicable local and national codes that regulate the installation and operation of your equipment. These codes vary from area to area and usually change with time. It is your responsibility to determine which codes should be followed and to verify that the equipment, installation, and operation comply with the latest revision of these codes.

Products Warranty

All CIMON products, including hardware, software, and firmware (collectively called "Products") license disclaimer and limitation of warranties.

YOUR USE OF ANY CIMON PRODUCTS AND CONTENT ACCESSIBLE THROUGH THE PRODUCTS IS ENTIRELY AT YOUR OWN RISK. EXCEPT AS DESCRIBED IN THIS AGREEMENT, THE PRODUCTS ARE PROVIDED "AS IS." TO THE MAXIMUM EXTENT PERMITTED BY APPLICABLE LAW, CIMON, ITS AFFILIATES, AND ITS THIRD-PARTY SERVICE OR DATA PROVIDERS, LICENSORS, DISTRIBUTORS, OR SUPPLIERS (COLLECTIVELY REFERRED TO AS "SUPPLIERS") DISCLAIM ALL WARRANTIES, EXPRESS OR IMPLIED, INCLUDING ANY WARRANTY THAT THE PRODUCTS ARE FIT FOR A PARTICULAR PURPOSE, TITLE, MERCHANTABILITY, DATA LOSS, NON-INTERFERENCE WITH OR NON-INFRINGEMENT OF ANY INTELLECTUAL PROPERTY RIGHTS, OR THE ACCURACY, RELIABILITY, QUALITY OR CONTENT IN OR LINKED TO THE PRODUCTS.

CIMON, ITS AFFILIATES, AND SUPPLIERS DO NOT WARRANT THAT THE PRODUCTS ARE SECURE AND FREE FROM BUGS, VIRUSES, INTERRUPTION, ERRORS, THEFT, OR DESTRUCTION. FURTHER, CIMON DOES NOT WARRANT ACCESS TO THE INTERNET OR ANY OTHER SERVICE, CONTENT, OR DATA TRANSMITTED THROUGH THE PRODUCTS. IF THE EXCLUSIONS FOR IMPLIED WARRANTIES DO NOT APPLY TO YOU, ANY IMPLIED WARRANTIES ARE LIMITED TO 60 DAYS FROM THE DATE OF PURCHASE OR DELIVERY OF THE PRODUCTS, WHICHEVER IS SOONER. EQUIPMENT DAMAGE OR SERIOUS INJURY TO PERSONNEL, INCLUDING DEATH, CAN RESULT FROM THE FAILURE TO FOLLOW ALL APPLICABLE CODES AND STANDARDS, INCLUDING ENGINEERING STANDARDS. CIMON DOES NOT ASSUME ANY RESPONSIBILITY FOR YOUR PRODUCT DESIGN, INSTALLATION OR OPERATION.

CIMON, ITS AFFILIATES, AND SUPPLIERS DISCLAIM ANY REPRESENTATIONS OR WARRANTIES THAT YOUR USE OF THE PRODUCTS WILL SATISFY OR ENSURE COMPLIANCE WITH ANY LEGAL OBLIGATIONS, LAWS, OR REGULATIONS. LIMITATION OF LIABILITY AND INDEMNITY: TO THE MAXIMUM EXTENT PERMITTED BY APPLICABLE LAW, THE ENTIRE LIABILITY OF CIMON, ITS AFFILIATES, AND SUPPLIERS FOR ALL MATTERS OR CLAIMS RELATING TO THIS AGREEMENT SHALL BE LIMITED TO THE AMOUNT YOU PAID FOR THE PRODUCTS DURING THE TWELVE (12) MONTHS BEFORE SUCH CLAIM. THE STATUTE OF LIMITATIONS FOR FILING A CLAIM SHALL BE LIMITED TO THE SHORTER OF TWELVE MONTHS OR THE SHORTEST PERIOD ALLOWED UNDER APPLICABLE LAW.

Products Warranty

SUBJECT TO APPLICABLE LAW, CIMON, ITS AFFILIATES, AND SUPPLIERS ARE NOT LIABLE FOR ANY OF THE FOLLOWING: (A) INDIRECT, SPECIAL, INCIDENTAL, PUNITIVE OR CONSEQUENTIAL DAMAGES; (B) DAMAGES RELATING TO FAILURES OF TELECOMMUNICATIONS, THE INTERNET, ELECTRONIC COMMUNICATIONS, CORRUPTION, SECURITY, LOSS OR THEFT OF DATA, VIRUSES, SPYWARE, LOSS OF BUSINESS, REVENUE, PROFITS OR INVESTMENT, OR USE OF SOFTWARE OR HARDWARE THAT DOES NOT MEET CIMON SYSTEM REQUIREMENTS. THE ABOVE LIMITATIONS APPLY EVEN IF CIMON AND ITS AFFILIATES AND SUPPLIERS HAVE BEEN ADVISED OF THE POSSIBILITY OF SUCH DAMAGES AND/OR THE POSSIBILITY OF DAMAGES GREATER THAN THE LIMITATION ABOVE. THIS AGREEMENT SETS FORTH THE ENTIRE LIABILITY OF CIMON, ITS AFFILIATES, AND YOUR EXCLUSIVE REMEDY CONCERNING THE SOFTWARE AND ITS USE. THE PARTIES FURTHER AGREE THAT THE APPLICABLE LAW AND VENUE FOR ANY DISPUTE ARE THE LAWS OF NEVADA. TO THE EXTENT ALLOWED BY APPLICABLE LAW, ANY CLAIMS SHALL BE BROUGHT IN HENDERSON, NEVADA, AND NEVADA LAW SHALL APPLY.

MEMO

고객서비스 정보

- 회 사 명: (주)싸이몬 CIMON CO.,Ltd
- 홈페이지: www.cimon.co.kr
- A / S: 경기도 용인시 수지구 포은대로 59 번길 40 (상현동 1187)
시그니처광교 2 차 지식산업센터 805 호
- 전 화: 1899-1891
- 팩 스: 031-216-4789
- 담 당: 품질보증팀 팀장
- 이 메 일: cs@cimon.com

CIMON CO., LTD

Korea Address

#805 Office Bld., Signature Gwang-gyo2
40, Poeun-daero 59beon-gil, Suji-gu, Yongin-si, Gyeonggi-do,
Republic of Korea 16864
Tel. +82-31-780-1039

USA Address

CIMON Inc. 2435 W. Horizon Ridge Pkwy, #100, Henderson,
NV 89052
Tel. +1-702-820-1060
Homepage : www.cimon.com