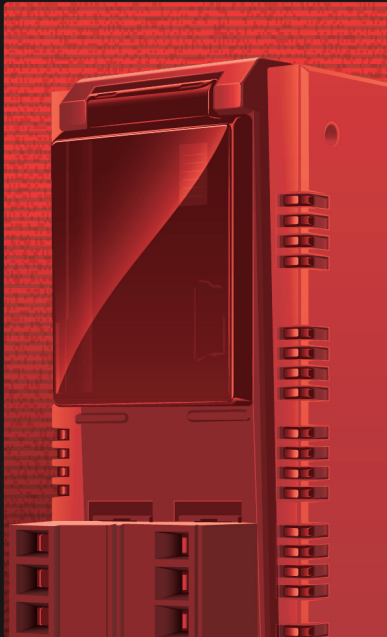
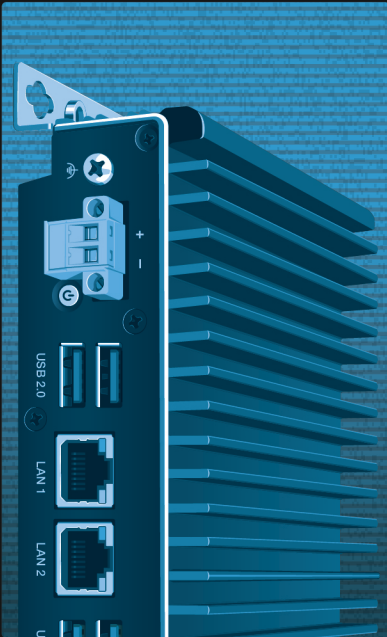


PRODUCT CATALOG



PRODUCT CATALOG



Powerful Automation Tools from

CIMON

SCADA 06

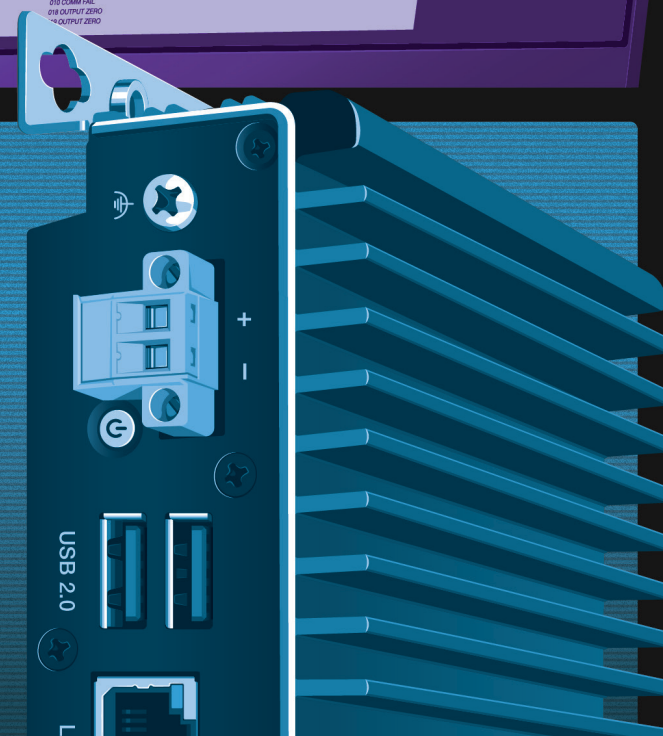
UltimateAccess Web 08



IPC 12

500 Series Industrial Panel PC 14

NB Series Industrial Box PC 18



HMI 22

eXT2 Series 24

nXT Series 30

Canvas HMI Software 34



PLC 36

PLC-S Plus 38

PLC-S 42

Micro-S 48

CICON PLC Software 52



09:34

CIMON

Control

All Inverters ON

Devices

Inverters 17 / 21

Combiner Boxes 210 / 210

Circuit Breakers 32 / 32

Pyranometer 2 / 2



Availability

71 %

Weather

Ambient Temp 87 °F

Wind Direction 160 °

Wind Speed 3 m/s

GHI 543 w/m²

Field Overview

001 1050 kW	002 1049.5 kW	003 1052 kW	004 1037.9 kW	005 992.1 kW	006 1059 kW	007 1029.3 kW
008 1050 kW	009 COMM FAIL	010 COMM FAIL	011 1037.9 kW	012 992.1 kW	013 1059 kW	014 1029.3 kW
015 1050 kW	016 1049.5 kW	017 1052 kW	018 0.0 kW	019 0.0 kW	020 1059 kW	021 1029.3 kW

POI Export

32.51 MW

POI SP

42.00 MW

PR %

50.25x

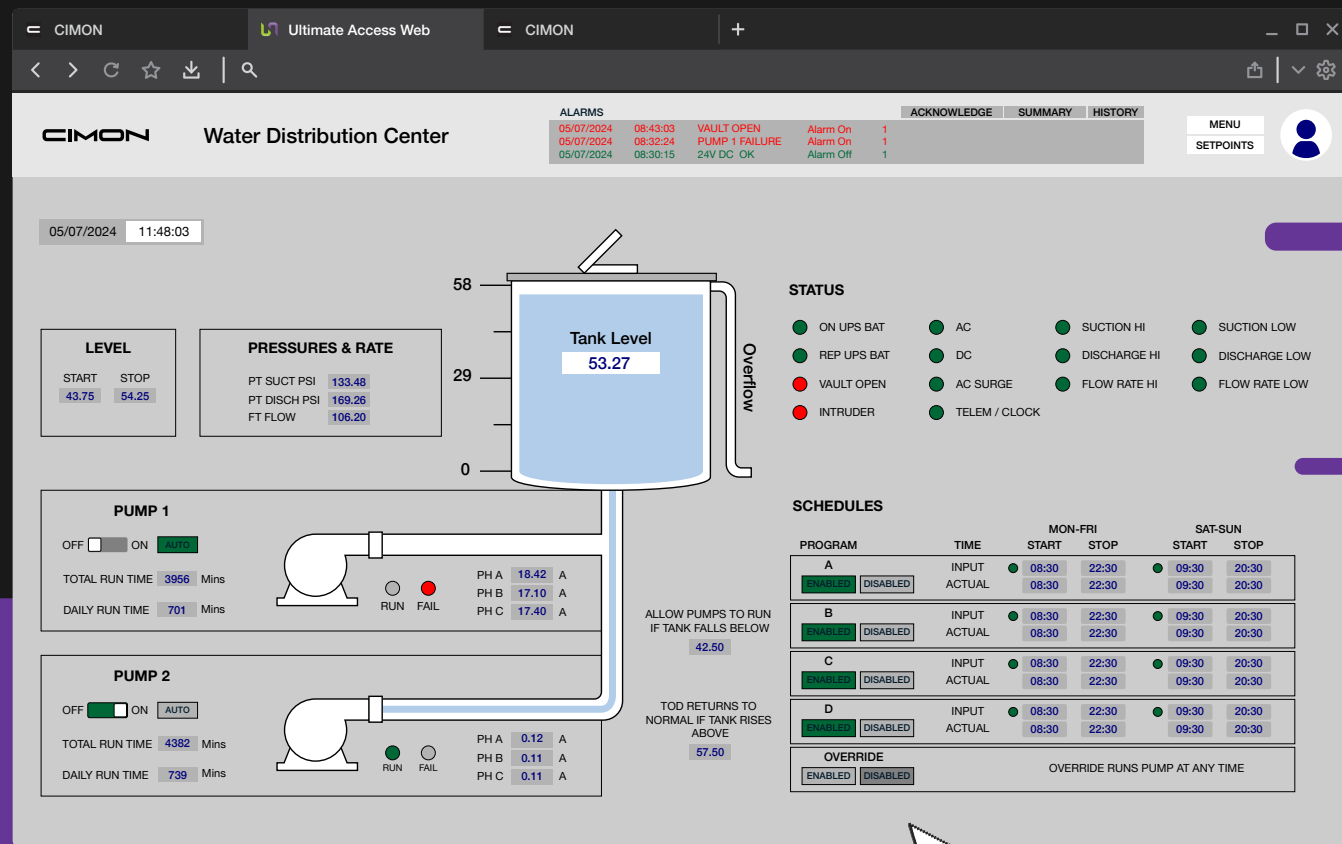
SCADA

Event Time	Alarm Name	Condition	Message
01-31-2024 07:56:23	009 COMM FAIL		
01-31-2024 07:56:23	010 COMM FAIL		
01-31-2024 07:58:39	018 OUTPUT ZERO		
01-31-2024 07:58:39	019 OUTPUT ZERO		

UltimateAccess Web

The From-Anywhere SCADA Software

UltimateAccess Web is an HTML5-based server that unifies plant floor operations by connecting any equipment, regardless of brand or platform, to SQL databases, including built-in TimeScaleDB and cloud services. This bridges the gap between production and IT, minimizing downtime and boosting efficiency through real-time insights.



HTML5 Web-Based Deployment

Access controls from PCs, smartphones, or tablets for on-the-go monitoring and faster response times.

Symbol Library

Leverage thousands of industry-specific SVG graphics to create intuitive interfaces.

Built-in Historian

Outpace legacy SQL systems using PostgreSQL with built-in TimeScaleDB for secure, high-speed time-series data storage & analysis.

Audit Trail

Achieve 21 CFR Part 11 compliance for regulated industries, ensuring data integrity and simplifying audits.

3D Modeling

Rotate 3D models in a wide range of formats, including OBJ, .STL, .FBX, .gltf, .glb across multiple axes for detailed visualizations that aid troubleshooting.

Communication Drivers

Connect through over 400 protocols, including EtherNet/IP, Siemens S7, OPC UA, Modbus, BACnet, and MQTT, enabling broad interoperability.

Pictorial Charts

Transform complex data into clear visuals, enabling quicker decisions and process optimization.

Page Recorder

Capture alarm events for playback, accelerating root-cause analysis and reducing mean time to repair.

Enhanced Surveillance

Integrate RTSP IP cameras for high-clarity remote monitoring, enhancing security and flexibility.



Licenses

Development + Runtime License

Part Number	UA02-0075/DS	UA02-0150/DS	UA02-0500/DS	UA02-1500/DS	UA02-3000/DS	UA02-FULL/DS
Tags	75	150	500	1500	3000	Unlimited
Description	HTML5-based Web Server + Development + Runtime Viewer					

Runtime Viewer License

Part Number	UA02-0075/RS	UA02-0150/RS	UA02-0500/RS	UA02-1500/RS	UA02-3000/RS	UA02-FULL/RS
Tags	75	150	500	1500	3000	Unlimited
Description	HTML5-based Web Server + Runtime Viewer					



IPC

500 Series Industrial Panel PC | NB Series Industrial Box PC

Elevate Your Industrial Environment

The CIMON 500 Series Industrial Panel PC is engineered for high performance in harsh industrial environments. Powered by the Intel® Celeron® J6412 quad-core processor (up to 2.6 GHz), this fanless, UL-certified system delivers robust computing for HMI, SCADA, and various industrial software applications. Its touchscreen, with up to 700 nits brightness, ensures clear visibility in diverse settings. Compatible with Windows, Linux, and numerous industrial software solutions, the 500 Series offers unmatched flexibility for limitless automation possibilities.



Already Upgraded



Comes standard with a high-performance processor, ample RAM and storage, and a flexible OS, all included with no add-ons or extra costs.

High-Performance Processing



Intel® Celeron® J6412 quad-core processor (up to 2.6 GHz) supports efficient multitasking for HMI, data acquisition, and control tasks.

Versatile Connectivity



Rich I/O options, including RS-232/422/485, USB, and LAN, enable seamless integration with industrial systems.

External Monitor Support



DP and HDMI ports enable connection to a secondary monitor for enhanced visualization and multitasking.

All-in-One SCADA Solution



UltimateAccess SCADA software is pre-installed, offering intuitive interfaces and robust visualization for seamless real-time control.

Industry-Standard Certifications



IP66, UL Type 4X, KC, CE, FCC, cULus Certifications.



Unmatched Durability



Fanless design with IP66-rated front panel withstands dust, water, shock, and vibration, ensuring 24/7 reliability in extreme conditions.

Customizable Hardware



Configure SSD, RAM, storage, and more to match your exact performance needs.

Flexible OS Options



Equip your system with Windows 11 IoT Enterprise by default, or upgrade to Windows 11 Pro or Linux.



Functional

Part Number	CM-INP510-D	CM-INP512-D	CM-INP515-D	CM-INP519-D
CPU	Intel® Celeron® Quad-Core J6412 SoC (Fanless)			
Memory	8GB DDR4 SDRAM			
Storage	SATA x 1 (SSD 250GB)			
Operating System	Windows 11 IoT Enterprise (Default) / Windows 11 Pro / Linux			
LCD Size	10.4 inch	12.1 inch	15 inch	19 inch
Resolution	800x600 (SVGA)	1024x768 (XGA)	1024x768 (XGA)	1280x1024 (SXGA)
Backlight	LED			
Luminance	700cd/m ²	600cd/m ²	500cd/m ²	400cd/m ²
Touch	Resistive			
Display Ports	1 x HDMI port, 1 x DP port			
COM 1	1 x RS-232/422/485 port (default: RS232)			
COM 2	1 x RS-232 port	2 x RS-232 ports		
COM 3	-	2 x RS-232 ports		
COM 4	-	1 x RS-422/485 port		
Ethernet	Gigabit Ethernet, 2 x ports			
USB	1 x USB 2.0 port, 3 x USB 3.0 ports			
Audio	1 x Line-Out port, 1 x Line-In port			

The Compact Industrial PC Powerhouse

The CIMON NB Series Box PC delivers exceptional performance in a sleek, fanless design built for the toughest industrial environments. Powered by a range of Intel® processors, this UL-certified system ensures unwavering reliability for edge computing, HMI, SCADA, and diverse automation tasks. Compatible with Windows, Linux, ThinManager, and a wide range of industrial software, its compact form factor and DIN-rail mounting enable effortless integration, while robust noise immunity ensures consistent operation in challenging settings.



Versatile CPU Options



- Intel® Celeron® J3455 Quad-Core
- Intel® Core™ i3 Dual-Core
- Intel® Core™ i5 Quad-Core
- Intel® Core™ i7 Quad-Core

Flexible Connectivity



Rich I/O options, including RS-232/422/485, USB, LAN, DP, and HDMI, enable seamless integration with industrial systems and modern displays.

DIN-Rail Mounting



Compact, DIN-rail mountable design simplifies installation in space-constrained industrial environments.

Secure Longevity



UWF and EWF protect system volume and RAM from unauthorized writes, extending operational lifespan.

Extended Operating Temperature



Operates reliably from -20°C to +60°C, ensuring peak performance in extreme industrial environments.

Software Versatility



Supports a wide range of industrial software, empowering engineers to deploy tailored automation solutions effortlessly.



Functional

Part Number	CM-NB200-D	CM-NB3011-D	CM-NB5011-D	CM-NB7011-D
CPU	Intel Celeron J3455 Quad Core, 1.5GHz, 2M Cache (10W)	11th Intel® Core™ i3-1115G4E Dual Core, 2.2 GHz, 6M Cache (15W)	11th Intel® Core™ i5-1145G7E Quad Core, 1.5 GHz, 8M Cache (15W)	11th Intel® Core™ i7-1185G7E Quad Core, 4.4 GHz, 12M Cache (15W)
Memory	8GB DDR3L SO-DIMM	8GB DDR4 SO-DIMM		
Storage	1 x M.2 SATA 2242 Key SSD (Default 256GB)	1 x M.2 2280 Key M 250 GB (PCIe x4 only)		
Operating System	Windows 11 IoT Enterprise, Linux	Windows 11 IoT Enterprise (Default) / Windows 11 Pro / Linux		
Display Ports	2 x HDMI 1.4b ports, resolution 3840 x 2160 @ 30Hz	1 x DP++ port, 4096 x 2304 @ 60Hz 1 x HDMI 2.0 port, 4096 x 2160 @ 60Hz		
COM 1	1 x RS-232/422/485 port (default: RS232)			
COM 2	1 x RS-232 port	-		
Ethernet	2 x Gigabit Ethernet (10/100/1000BaseTX) ports			
USB	2 x USB 2.0 ports, 2 x USB 3.0 ports	4 x USB 3.0 ports		
Audio	1 x Line-Out port			



HMI

[eXT2 Series](#) | [nXT Series](#) | [Canvas Software](#)



Built for Industrial Excellence

The CIMON eXT2 Series HMI, available in 7", 10.1", 12.1", and 15.6" sizes, redefines industrial visualization with rugged hardware and high-quality resistive touchscreens. Powered by a quad-core ARM Cortex-A53 processor and a Linux embedded OS, this sleek, durable system delivers fast, reliable performance for HMI applications. High-resolution widescreen displays (up to 1080p) offering up to 1200 nits brightness and flexible VESA mounting, ensure seamless integration and stunning clarity in any industrial environment.

High-Speed Processing



Quad-core ARM Cortex-A53 with 64-bit architecture delivers up to 400% performance boost for demanding HMI tasks.

Ample Memory and Storage



2GB RAM and 8GB storage (4x and 64x more than the eXT HMI) easily support complex visualizations.

Widescreen Clarity



High-resolution display (up to 1080p) with a modern widescreen format ensures sharp, vibrant visuals.

Sleek, Durable Design



Slim, robust profile withstands harsh environments and simplifies installation.

Ultra-Bright Touchscreen



Up to 1200 nit brightness provides exceptional visibility in challenging lighting conditions.

VESA Mounting



Flexible VESA mount compatibility ensures effortless setup in diverse industrial configurations.

Extended Operating Temperature



Operates reliably from -20°C to +70°C, ensuring performance in harsh industrial environments.

Protocol Versatility



Supports a wide range of industrial protocols, enabling seamless connectivity with PLCs and automation systems.

Industrial Robustness



FCC, CE, UL, cUL, KC, IP66/IP68, UL Type 4X, 12 Certifications.

Functional

7-Inch Models

Part Number	CM-eXT2-07-R-DE	CM-eXT2-07-R-DF	
Display Size	7-Inch Wide TFT Color		
Front Enclosure	Front: Plastic / Rear: Plastic		
Resolution	1024 x 600 WSVGA (128:75)		
Brightness	1,000 cd/m ²		
Touch Type	4-Wire Resistive		
Interfaces	Ethernet / Serial	1 x Gigabit Ethernet (RJ45) / RS-422/485, RS-232C	2 x Gigabit Ethernet (RJ45) / RS-422/485, RS-232C
	USB Host / Tool Port	1 x Type A / 1 x USB-C	
	SD Card	-	1 x MicroSD Card Slot
	Audio	-	1 x Line-Out Port
Operating Temperature	0 – 65°C (32 – 149°F)	-20 – +70°C (-4 – +158°F)	
Power Supply	24 VDC		
Dimensions (mm)	185 x 127 x 51.9 (Panel Cutout: 177 x 119)		
Weight	510 g (1.12 lbs)		

10-Inch Models

Part Number	CM-eXT2-10W-R-DE	CM-eXT2-10W-R-DF	CM-eXT2-10W-RH-DF
Display Size	10.1-Inch Wide TFT Color		
Front Enclosure	Front: Aluminum Rear: Plastic	Front: Aluminum Rear: Aluminum	
Resolution	1280 x 800 WXGA (16:10)		
Brightness	500 cd/m ²	1,200 cd/m ²	
Touch Type	5-Wire Resistive		
Interfaces	Ethernet / Serial	1 x Gigabit Ethernet (RJ45) / RS-422/485, RS-232C	2 x Gigabit Ethernet (RJ45) / RS-422/485, RS-232C
	USB Host / Tool Port	1 x Type A / 1 x USB-C	
	SD Card	-	1 x MicroSD Card Slot
	Audio	-	1 x Line-Out Port
Operating Temperature	0 – 65°C (32 – 149°F)	-20 – +70°C (-4 – +158°F)	
Power Supply	24 VDC		
Dimensions (mm)	262.3 x 187.9 x 51.9 (Panel Cutout: 254 x 179)		
Weight	1.4 kg (3.09 lbs)	1.6 kg (3.52 lbs)	



Functional

12-Inch Models

Part Number	CM-eXT2-12W-R-DE	CM-eXT2-12W-R-DF	CM-eXT2-12W-RH-DF
Display Size	12.1-Inch Wide TFT Color		
Front Enclosure	Front: Aluminum Rear: Plastic	Front: Aluminum Rear: Aluminum	
Resolution	1280 x 800 WXGA (16:10)		
Brightness	600 cd/m ²		1,000 cd/m ²
Touch Type	5-Wire Resistive		
Interfaces	Ethernet / Serial	1 x Gigabit Ethernet (RJ45) / RS-422/485, RS-232C	2 x Gigabit Ethernet (RJ45) / RS-422/485, RS-232C
	USB Host / Tool Port	1 x Type A / 1 x USB-C	
	SD Card	-	1 x MicroSD Card Slot
	Audio	-	1 x Line-Out Port
Operating Temperature	0 – 65°C (32 – 149°F)		-20 – +70°C (-4 – +158°F)
Power Supply	24 VDC		
Dimensions (mm)	314.3 x 220.5 x 53.9 (Panel Cutout: 305 x 212)		
Weight	2.2 kg (4.85 lbs)	2.4 kg (5.29 lbs)	

15-Inch Models

Part Number	CM-eXT2-15W-R-DE	CM-eXT2-15W-R-DF	CM-eXT2-15W-RH-DF
Display Size	15.6-Inch Wide TFT Color		
Front Enclosure	Front: Aluminum Rear: Plastic	Front: Aluminum Rear: Aluminum	
Resolution	1920 x 1080 WXGA (16:9)		
Brightness	450 cd/m ²		1,200 cd/m ²
Touch Type	5-Wire Resistive		
Interfaces	Ethernet / Serial	1 x Gigabit Ethernet (RJ45) / RS-422/485, RS-232C	2 x Gigabit Ethernet (RJ45) / RS-422/485, RS-232C
	USB Host / Tool Port	1 x Type A / 1 x USB-C	
	SD Card	-	1 x MicroSD Card Slot
	Audio	-	1 x Line-Out Port
Operating Temperature	0 – 65°C (32 – 149°F)		-20 – +70°C (-4 – +158°F)
Power Supply	24 VDC		
Dimensions (mm)	393.6 x 247.9 x 53.9 (Panel Cutout: 385 x 239)		
Weight	3.2 kg (7.05 lbs)	3.4 kg (7.49 lbs)	





Built for Extreme Environments

The CIMON nXT Series flagship HMI redefines rugged visualization with industrial-grade capacitive touchscreens and robust aluminum construction. Powered by a quad-core ARM Cortex-A9 processor and a Linux embedded OS, this durable system delivers reliable performance for demanding HMI applications in harsh outdoor and hazardous locations. With UL Class 1 Division 2 certification, IP68-rated ingress protection, UL Type 4X/12 front panel, superior sunlight readability, and compatibility with user-friendly CIMON Canvas software, it ensures seamless integration and exceptional clarity in any industrial setting.

High-Speed Processing



Quad-core ARM Cortex-A9 with 64-bit architecture provides up to 400% performance boost for intensive HMI tasks.

Capacitive Touchscreen



Multi-touch support with minimal pressure required, offering enhanced visibility and user experience in direct sunlight.

Wide Temperature Range



Operates reliably from -20°C to 65°C, making it ideal for extreme climates.

Superior Ingress Protection



IP68-rated front design ensures complete dustproofing and waterproofing for harsh environments.

Harsh Environment Certifications



UL Type 4X and 12 rated for resistance to moisture, dust, and corrosion; UL Class 1 Division 2 certified for hazardous areas.

Edge Computing Capabilities



Dual Ethernet ports facilitate secure LAN-to-cloud connectivity for efficient data processing at the edge.

Software Compatibility



Integrates with CIMON Canvas HMI visualization software, providing intuitive tools for users of all skill levels.

Rugged Construction



Aluminum case for durability and reliable operation in high-vibration and shock-prone settings.

High-Brightness Display



1000 nits luminance provides excellent visibility even in high-glare environments.



Functional

Part Number	CM-nXT07-D	
Display Size	7-Inch Wide TFT Color	
Front Bezel	Aluminum	
Resolution	800 x 480 WGA	
Brightness	1,000 cd/m ²	
Touch Type	Capacitive (5 Points)	
Interfaces	Ethernet	2 x Gigabit Ethernet (RJ45)
	COM1	RS-422/485
	COM2	RS-232C
	USB Host / Tool Port	1 x Type A / 1 x USB Mini-B
	SD Card	1 x SD Card Slot
	Audio	1 x Line-Out Port
Operating Temperature	0 – 65°C (32 – 149°F)	
Power Supply	24 VDC	
Dimensions (mm)	189 x 131 x 53.4 (Panel Cutout: 177 x 119)	
Weight	0.879 kg (1.94 lbs)	

The Intuitive HMI Software for Smarter, Customized Control

Canvas HMI design software, provided free of charge with our powerful hardware offerings, delivers robust, resource-efficient tools tailored for embedded systems. It combines high-performance functionality, scalable visuals, and advanced customization to accelerate development cycles and ensure seamless integration across versatile, high-capability environments.



100% Free Software

Always free downloads, updates, training, support, and consultation.

Versatile Graphics Integration

Elevate your projects with support for SVG, JPG, GIF, PNG, PDF, MP4, BMP, WAV and MP3 formats, enabling stunning, scalable visuals without compatibility hassles.

Effortless Drag-and-Drop Interface

Speed up development by intuitively dragging and dropping tags, objects, and elements, ideal for beginners and experts alike.

Powerful JavaScript Scripting Engine

Unlock unlimited flexibility with advanced scripting for custom logic, automation, and integration with PLCs or IIoT systems.

Multiple Language Support

Canvas HMI design software supports many languages, including Korean, English, Spanish, Portuguese, and Thai, enhancing global accessibility.

Enhanced Simulation Tools

Debug and optimize projects confidently using offline/online simulation without physical HMI hardware.

Expansive Built-in Symbol Library

Access a comprehensive collection of ready-to-use symbols to streamline workflows and eliminate the need for external imports.

Adaptive Scaling for Any Device

Ensure flawless, responsive experiences across screens with automatic project size adjustment to match varying resolutions.

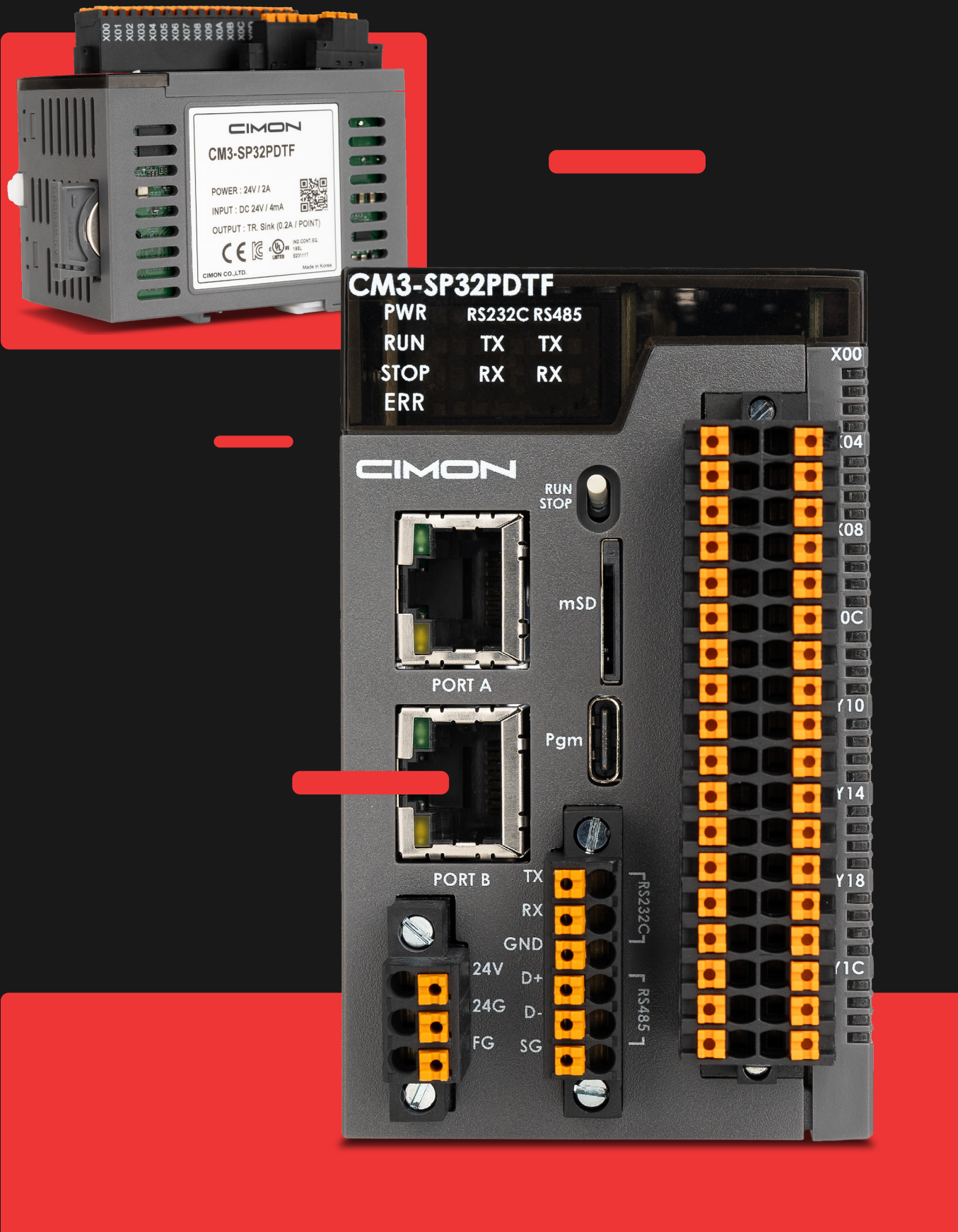
360-Degree Object Rotation

Create precise and dynamic designs with full 360-degree object rotation.



PLC

PLC-S Plus | PLC-S | Micro-S | CICON Software



The Ultra-Fast, Ultra-Tough CPU Module

The CIMON PLC-S Plus CPU Module delivers lightning-fast processing for industrial automation. Powered by a high-speed CPU (<20 ns), it supports up to 512 I/O points and 15 expansion modules. Class 1 Division 2 certified for hazardous and harsh environments, it operates reliably from -20°C to +70°C. With secure DIN-rail mounting, Modbus and EtherNet/IP support, free firmware-upgradable protocol expansions, and IEC 61131-3-compliant CIMON software, it ensures seamless control.

Ultra-Fast Processing



High-speed CPU with <20 ns processing delivers rapid, precise control for complex automation tasks.

Extended Operating Temperature



Operates reliably from -20°C to +70°C, thriving in harsh industrial environments.

Class 1, Division 2 Certified



Rugged casing with IP20 protection and UL Class 1, Div 2 certification ensures reliable operation even in designated hazardous locations.

Scalable I/O Capacity



Supports up to 15 expansion modules and 512 I/O points for large-scale, precision control.

Seamless DIN-Rail Mounting



Secure, compact design simplifies installation in space-constrained industrial setups.

Intuitive Programming



IEC 61131-3-compliant CIMON software provides a user-friendly interface for efficient PLC configuration and programming.

Robust Connectivity



Supports Modbus TCP/RTU Master & Slave, User Protocol, EtherNet/IP Scanner, and Adapter, with free firmware updates to expand protocol compatibility.

Advanced PID Control



Built-in 64-Channel Auto-Tuning PID functionality ensures accurate process control for diverse applications.

Edge Computing Capabilities



Dual Ethernet ports facilitate secure LAN-to-cloud connectivity for efficient data processing at the edge.



Functional

Part Number	CM3-SP32PDTF	CM3-SP32PDCF	CM3-SP16PDRF
Power	12-24 VDC, 0.58 A		
Discrete Input	16 Sink/Source 24 VDC	16 Sink/Source 24 VDC	8 Sink/Source 24 VDC
Discrete Output	16 Sink 24 VDC, 0.2A/pt, 2A COM	16 Source 24 VDC, 0.2A/pt, 2A COM	8 Relay, 24 VDC/250 VAC, 2.0A/pt, 5A COM
USB	USB 2.0 (C type): For Loader Protocol		
Serial	RS-232C (Max 115,200 bps), RS-485 (Max 115,200 bps) 1 port each CIMON Loader, CIMON-HMI, Modbus RTU Slave		
LAN	10/100/1000Base-T/TX 2 ports CIMON Loader, CIMON-HMI, Modbus TCP Slave		
SD Card	1 x MicroSD Card Slot		



Small Footprint, Massive Functionality

The CIMON CM3 Series PLC-S mini-modular PLC delivers robust performance in an ultra-compact design for small to medium automation tasks. With up to 384 I/O points via expansion modules, it offers built-in high-speed counting (20 kHz), PTO motion control (100 kHz), and PID capabilities. Featuring Ethernet, serial ports, plus the intuitive CICON software, it ensures seamless integration and precise control in diverse industrial setups.

High-Speed Processing



High-performance CPU supports high-speed counting (up to 20 kHz) and PTO motion control (up to 100 kHz) for precise automation.

Compact Expansion



Supports up to 384 I/O points with CM3 expansion modules, making it ideal for small to medium applications.

Embedded I/O



Up to 16 discrete inputs and 16 discrete outputs for efficient control in compact setups.

Seamless DIN-Rail Mounting



Ultra-compact, secure design simplifies installation in space-constrained environments.

Advanced PID Control

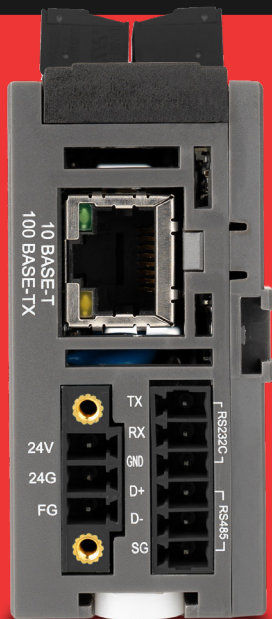
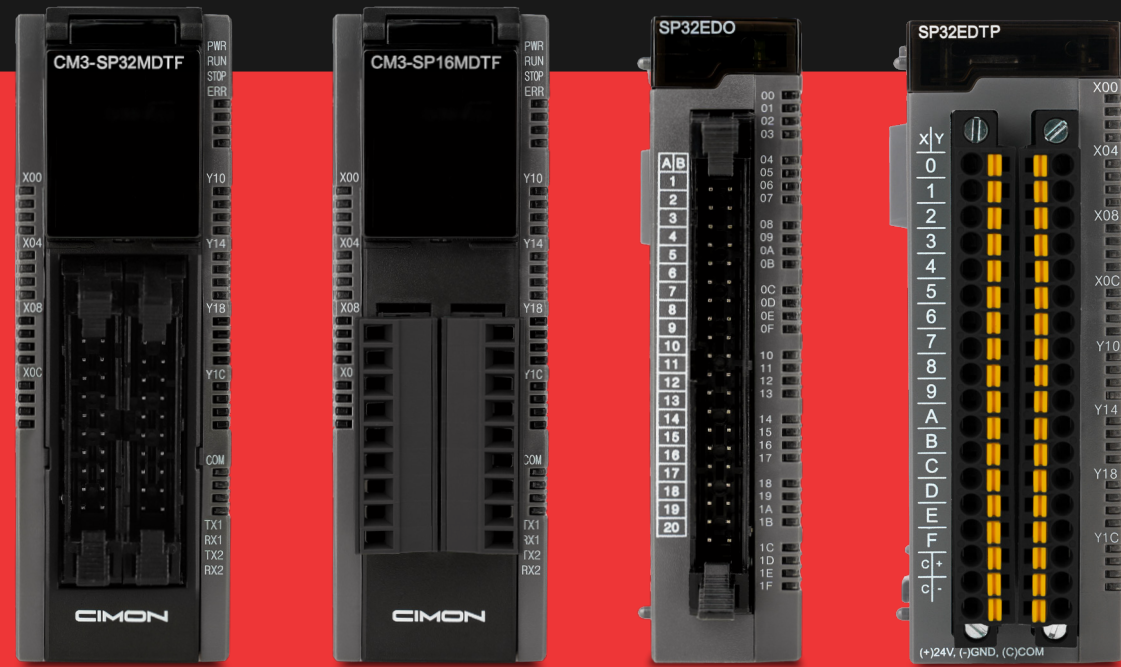


Built-in PID functionality ensures accurate process control for diverse applications.

Intuitive Programming



CICON software provides a user-friendly interface for efficient PLC configuration.



Functional

CPU Module

Part Number	CM3-SP32-MDTF-SD	CM3-SP32-MDCF-SD	CM3-SP16-MDTF	CM3-SP16-MDCF	CM3-SP16-MDRF	CM3-SP16-MDRV
Software	CICON					
Power	12/24 VDC, Expandable					
Discrete Input	16 Sink/Source, 12/24 VDC		8 Sink/Source, 12/24 VDC		8 Sink/Source, 12/24 VDC	
Discrete Output	16 Sink, 12/24 VDC, 0.2A/pt, 2A COM	16 Source, 12/24 VDC, 0.2A/pt, 2A COM	8 Sink, 12/24 VDC, 0.2A/pt, 2A COM	8 Source, 12/24 VDC, 0.2A/pt, 2A COM	6 Relay, 24VDC/250 VAC, 2.0A pt, 5A COM	8 Relay, 24 VDC/250 VAC, 2.0A/pt, 5A COM
LAN	1 x 10/100 Ethernet (RJ45)					-
Serial	1 x RS-232, 1 x RS422/485					
USB Host / Tool Port	1 x USB Mini-B					
SD/MMC Card	1 Slot		-			

Digital I/O Module

Part Number	CM3-SP32EDO	CM3-SP32EDT	CM3-SP16EDR
Type	Discrete Input	Discrete Combo	
Input	32 Sink/Source, 24 VDC	16 Sink/Source, 24 VDC	8 Sink/Source, 24 VDC
Output	-	16 Sink, 12/24 VDC, 0.2A/pt, 2A COM	8 Relay, 250 VAC 2A/pt, 2A COM

Part Number	CM3-SP32EOT	CM3-SP32EOC	CM3-SP16EOR	CM3-SP32PWM
Type	Discrete Output			Pulse-Width Modulation
Input	-			
Output	32 Sink, 12/24 VDC, 0.2A/pt	32 Source, 12/24 VDC, 0.2A/pt	16 Relay, 250 VAC 2A/pt	32 Source 12/24 VDC, 0.2A/pt

Push-In Digital I/O Module

Part Number	CM3-SP32-EDOP	CM3-SP32-EDTP	CM3-SP32-EDCP	CM3-SP32-EOCP	CM3-SP32-EOTP
Type	Discrete Input	Discrete Combo		Discrete Output	
Input	32 Sink/Source, 24 VDC	16 Sink/Source, 24 VDC		-	
Output	-	16 Sink, 12/24 VDC, 0.2A/pt	16 Source, 12/24 VDC, 0.2A/pt	32 Source, 12/24 VDC, 0.2A/pt	32 Sink, 12/24 VDC, 0.2A/pt



Functional (cont.)

Analog I/O Module

Part Number	CM3-SP04-EAO-A	CM3-SP08-EAO-A	CM3-SP04-EAA-A	CM3-SP04-EOAI	CM3-SP04-EAOV
Type	Analog Input		Analog Combo	Analog Output	
Channels	4	8	2 Input / 2 Output	4	4
Current	0-20 mA		0-20 mA I/O	0-20 mA	-
Voltage	±10 V		±10 V I/O	-	±10 V
Resolution	14-bit		16-bit	14-bit	
Notes	External 24 VDC Required				

Communication Module

Part Number	CM3-SP02ERS	CM3-SP02ERR	CM3-SP01EET
Type	Serial		Ethernet
Interface(s)	1 × RS232 (DB9M), 1 × RS422/485	2 × RS232 (DB9M)	1 × RJ45 100 Mbps
Protocols	CIMON Protocol, User Protocol RTU, Modbus Master/Slave RTU		CIMON Protocol, User Protocol TCP, Modbus Master/Slave TCP

RTD & TC Module

Part Number	CM3-SP04-ERO-A	CM3-SP04-ETO-A
Type	RTD	TC
Channels	4	4
Sensor	PT100/JPT100/ PT1000/NI1000	K, J, E, T, B, R, S, and N
Resolution	14-bit	

Special Module

Part Number	CM3-SP02HSC	CM3-SP02HSD
Type	High-Speed Counter	
Speed	200 kHz	250/500 kHz
Encoder	5/12/24 VDC Source	5/24 V, HTL/RS-422A Line Drive
Notes	TB32M and SCB15M required	



The Mini PLC Built Like a Brick

The CIMON CM3 Micro-S Brick PLC is a compact, standalone powerhouse for small-scale machine control and remote automation. With up to 36 I/O points, including analog and discrete, it integrates high-speed counting (20 kHz), PTO motion control (100 kHz), and PID in a single, non-expandable unit for simplicity and cost-efficiency. Engineered for durability and dependable performance, the CM3 Micro-S delivers robust control in a space-saving design.



Versatile I/O Integration



Handles up to 36 I/O points (16 discrete inputs, 16 discrete outputs, 2 analog inputs, 2 analog outputs) for comprehensive control in a single unit.

Space-Saving Design



Ultra-compact, non-expandable PLC minimizes footprint, delivering cost-effective simplicity for standalone automation tasks.

Seamless Connectivity



Ethernet and serial ports enable robust support for Modbus RTU/TCP, User Protocol RTU/TCP, and CIMON protocol, ensuring easy integration.

High-Speed Precision



Built-in high-speed counting (up to 20 kHz) seamlessly interfaces with encoders for accurate pulse tracking.

Precise Control



Supports PTO motion control (up to 100 kHz) and PID for precise, responsive automation.

Effortless Installation



Secure DIN-rail mounting ensures quick, reliable setup in tight industrial spaces.

Functional

16 I/O

Part Number	CM3-SB16MDTF	CM3-SB16MDCF
Power	12/24 VDC, Non-expandable	
Discrete Input	8 Sink/Source, 12/24 VDC	
Discrete Output	8 Sink, 12/24 VDC, 0.2A/pt	8 Source, 12/24 VDC, 0.2A/pt
LAN	1 × 10/100 Ethernet (RJ45)	
Serial	1 × RS-232, 1 × RS422/485	

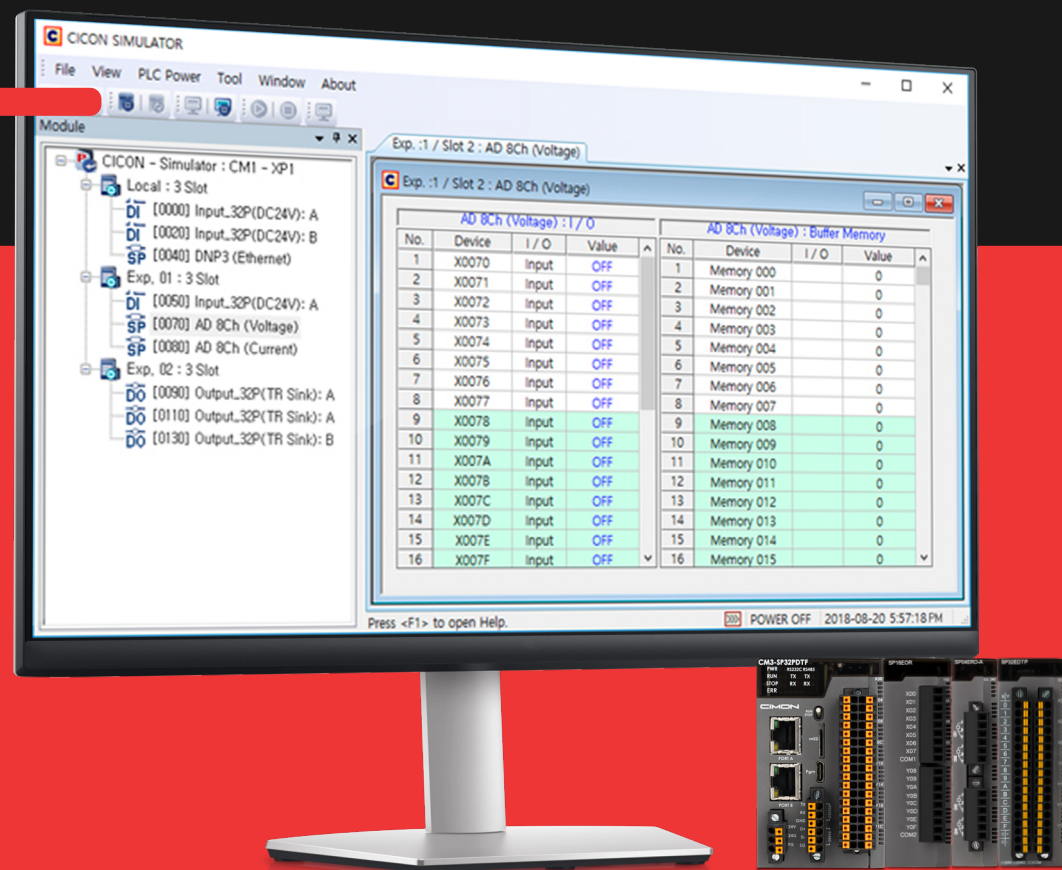
32 I/O

Part Number	CM3-SB32MDTF	CM3-SB32MDCF	CM3-SB32MDRF
Power	12/24 VDC, Expandable		
Discrete Input	16 Sink/Source, 12/24 VDC		
Discrete Output	16 Sink, 12/24 VDC, 0.2A/pt	16 Source, 12/24 VDC, 0.2A/pt	16 Relay, 12/24 VDC/250 VAC 2A/pt
Analog Input	2 × Point, 0–10V, 0–20mA		
Analog Output	2 × Point, 0–10V, 4–20mA		
LAN	1 × 10/100 Ethernet (RJ45)		
Serial	1 × RS-232, 1 × RS422/485		




The Versatile PLC Software for Streamlined Workflows

CICON PLC software streamlines PLC programming with seamless integration, intuitive tools, and scalable features that accelerate development and minimize errors. Trusted globally by engineers in diverse industries, it offers universal compatibility across all CIMON PLC series, built-in simulation for risk-free testing, and advanced diagnostics to reduce downtime. Backed by proven reliability, CICON is your gateway to optimized workflows, faster time-to-market, and sustainable automation solutions.



Integrated Engineering Environment 


Program every CIMON CPU module from a single platform to simplify development and reduce setup time.

Advanced Simulation Tools 


Test and validate programs offline with realistic simulations using the built-in simulator, minimizing on-site risks and accelerating commissioning.

Multi-Language Programming Support 


IEC 61131-3 compliant with Ladder Diagram, Structured Text, Function Block, Instruction List, and Sequential Function Chart.

Live Diagnostics & Monitoring 


Monitor PLC status, I/O points, and error codes in real-time during online mode, assisting in troubleshooting and minimizing system downtime.

Customizable User Interface 


Personalize your workspace with dark/light themes, adjustable layouts, and productivity-enhancing shortcuts to streamline daily operations.

Chassis Auto-Detect 


Automatically scan and detect connected hardware, verifying CPU and module configurations to eliminate slot assignment errors and streamline deployment.

Seamless PLC Firmware Management 

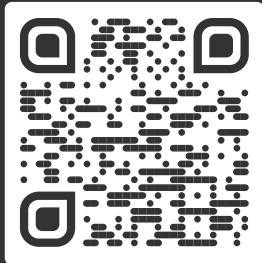
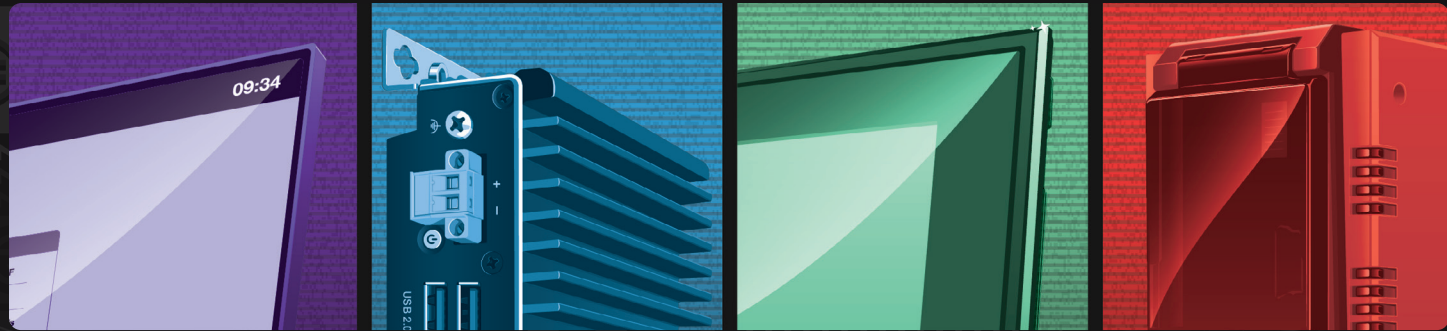
Easily manage and update PLC firmware directly through CICON, ensuring devices stay up-to-date with the latest features and performance enhancements.

AI Assist - Built-in Expert Guidance 

Ask questions directly in CICON and get instant AI-powered answers for features, troubleshooting, and workflows.

100% Free Software 

Always free downloads, updates, training, support, and consultation.



For detailed product specs,
software downloads, and help
files, visit our resource center.

Version: 02
Updated: 08.11.2025

CIMON



For more information, contact:

sales@cimoninc.com

+1(800)300-9916

